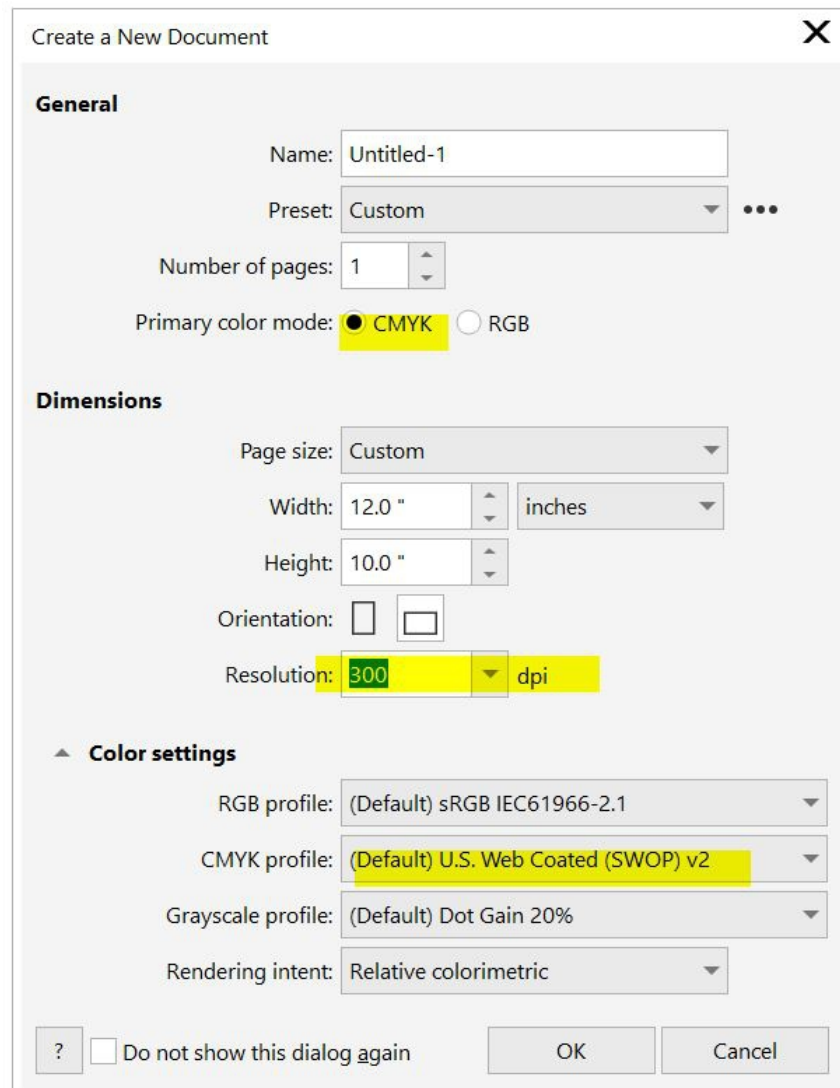
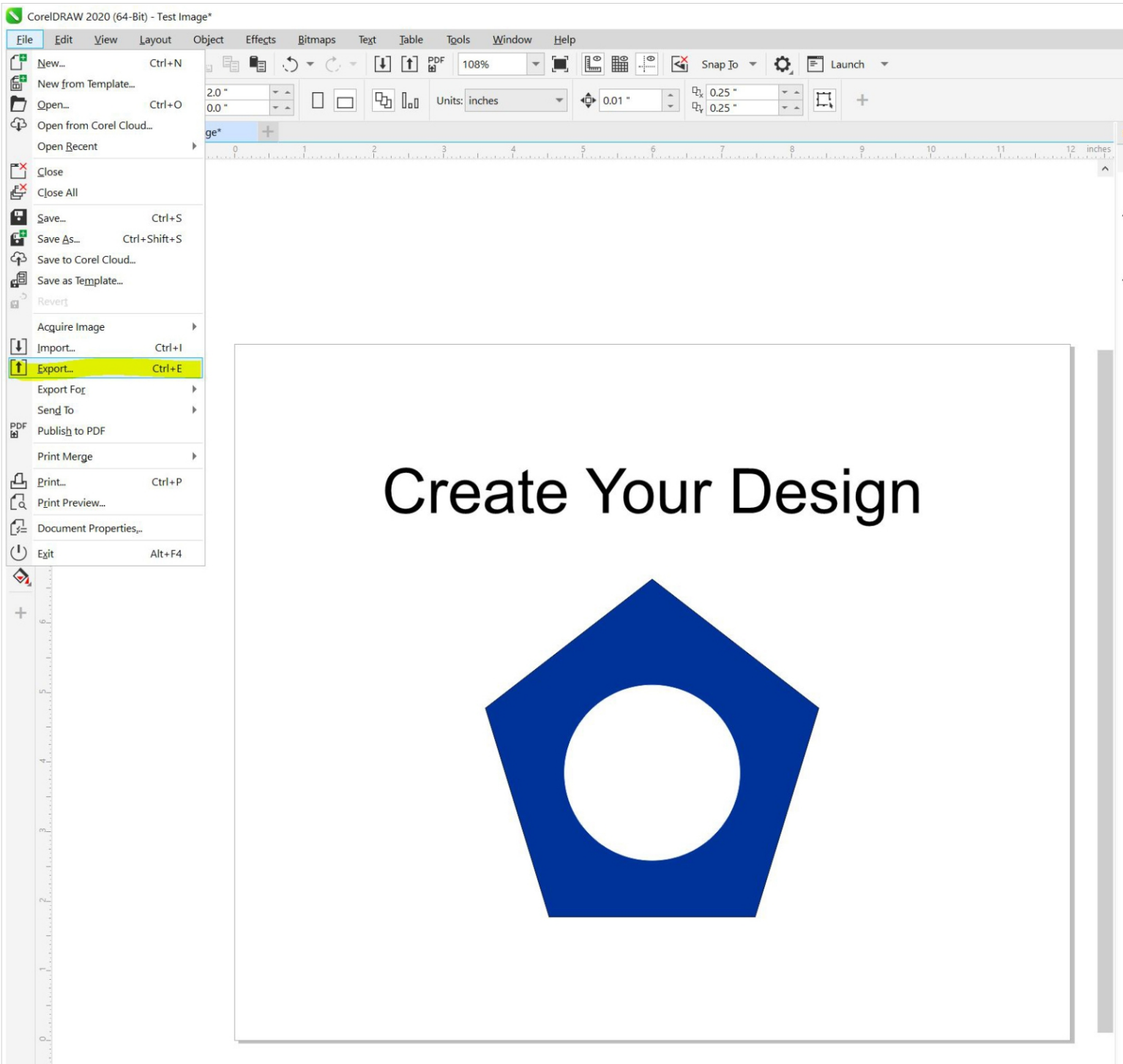


How to setup a file for Kornit Breeze DTG printers in Corel Draw.



1. Make a new file with the following settings
 - a. Primary color mode: CMYK
 - b. Set your width and height (in inches) for the size you want your design to be.
 - c. Set your orientation (landscape or portrait)
 - d. Set your resolution to 300 dpi
 - e. Set your CMYK profile to "(Default) U.S. Web Coated (SWOP) v2"

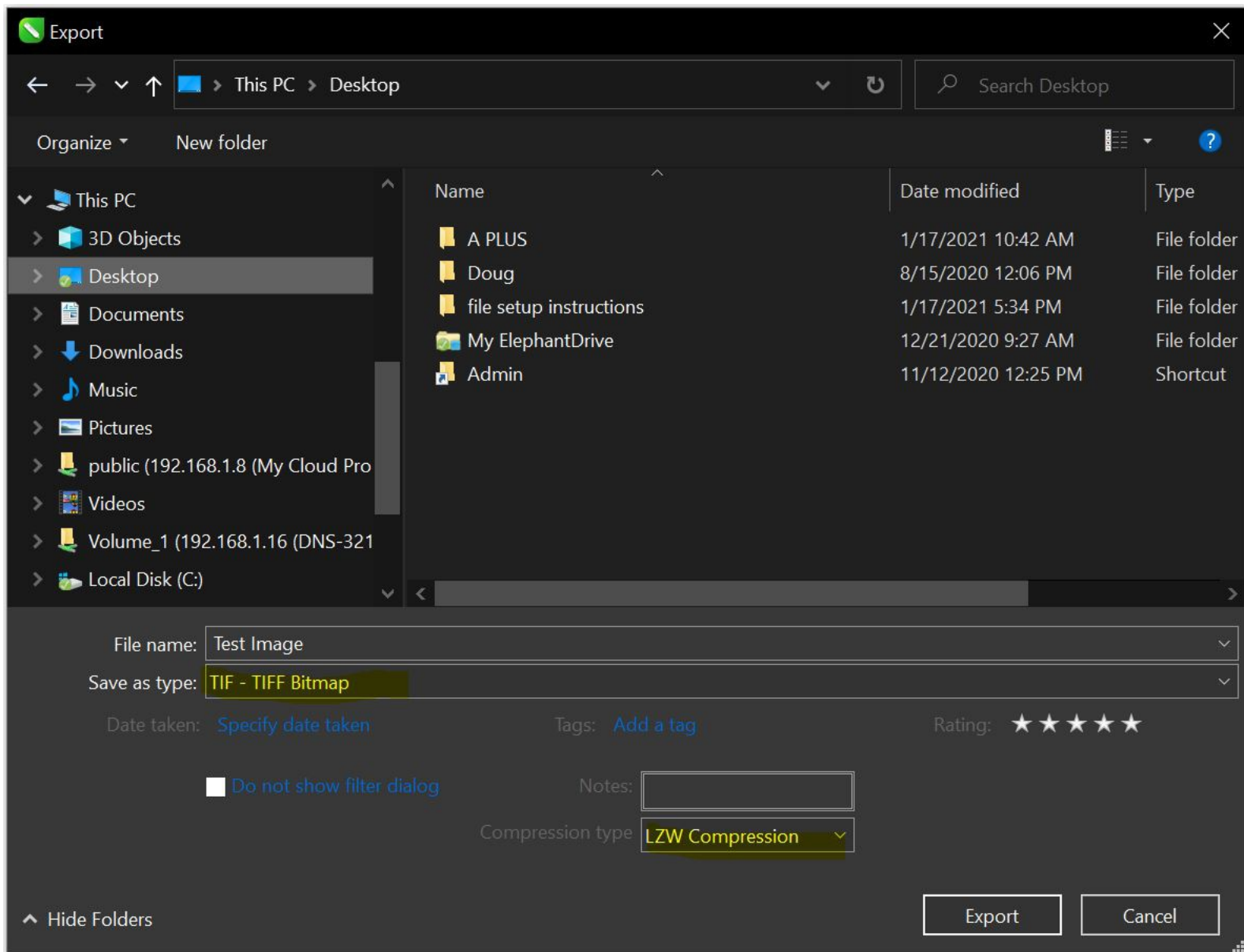


2. Create your design using only CMYK color values. Use popular color codes listed on our website. Do not let the CMYK values of the colors add up to more than 260.

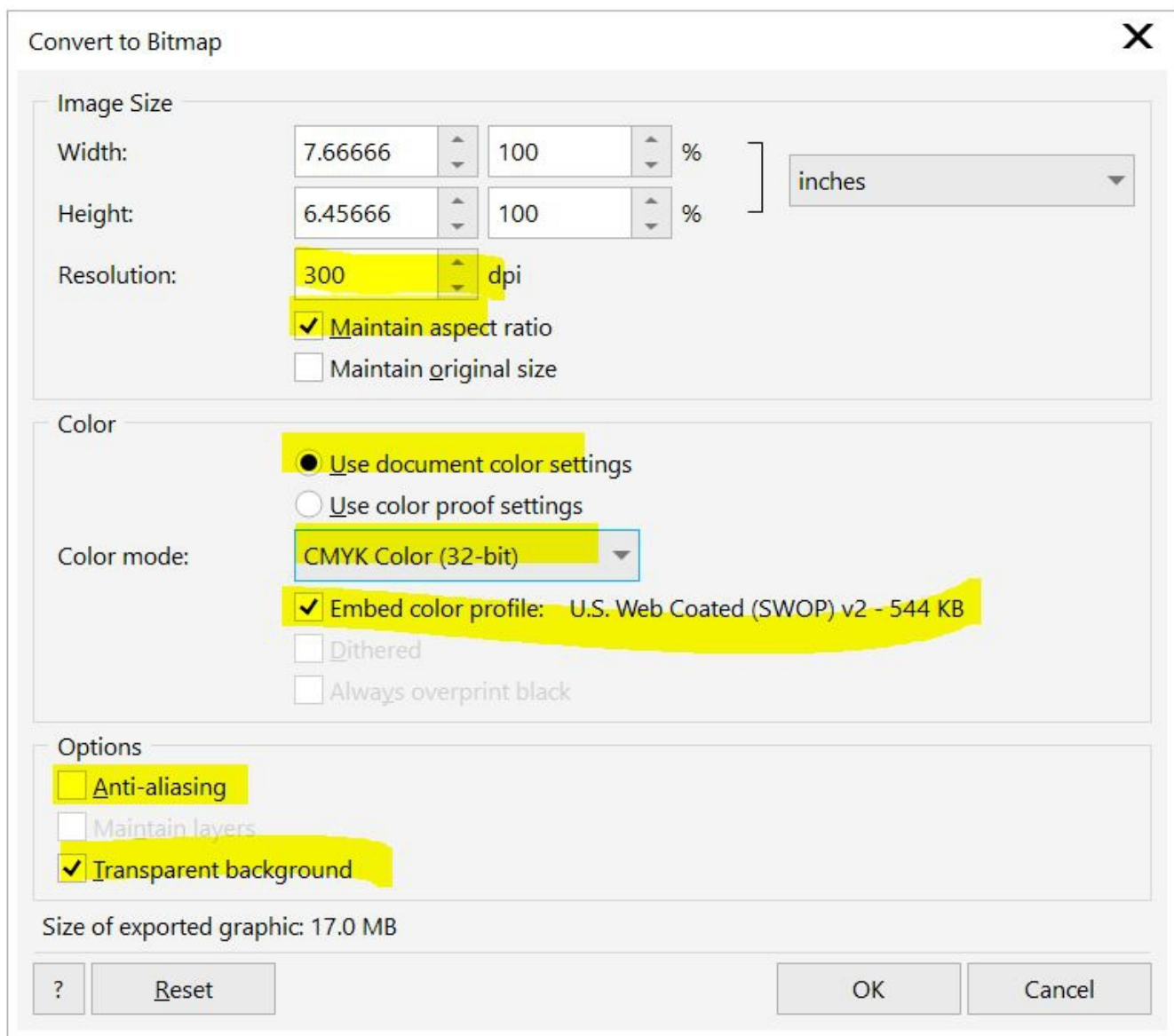
Do not put anything in the design that you do not want printed. This includes notes, backgrounds, mockups, etc. If you made your canvas the correct size in step 1, you should fill most of the space.

Save a master copy.

When you are done, go to File > Export.



3. Make your settings for the first save screen
 - a. Name your file
 - b. Save as type: TIF - TIFF Bitmap
 - c. Set the compression type to “LZW Compression”
 - d. Click Export



4. Make your settings for the second save screen
 - a. Resolution: 300 dpi
 - b. Check the box for “Maintain aspect ratio”
 - c. Click the radio button for “Use document color settings”
 - d. Color mode: CMYK Color (32-bit)
 - e. Check the box for “Embed color profile: U.S. Web Coated (SWOP) v2”
 - f. Uncheck the “Anti-aliasing” box
 - g. Check the “Transparent background” box
 - h. Click OK