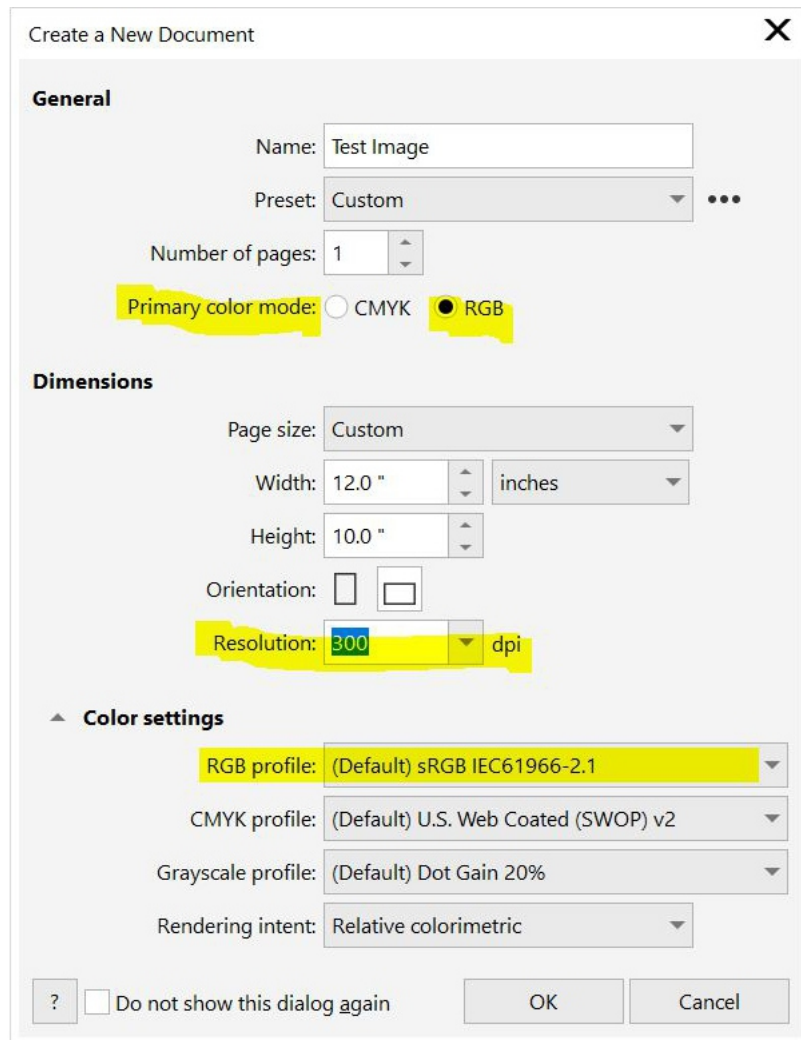
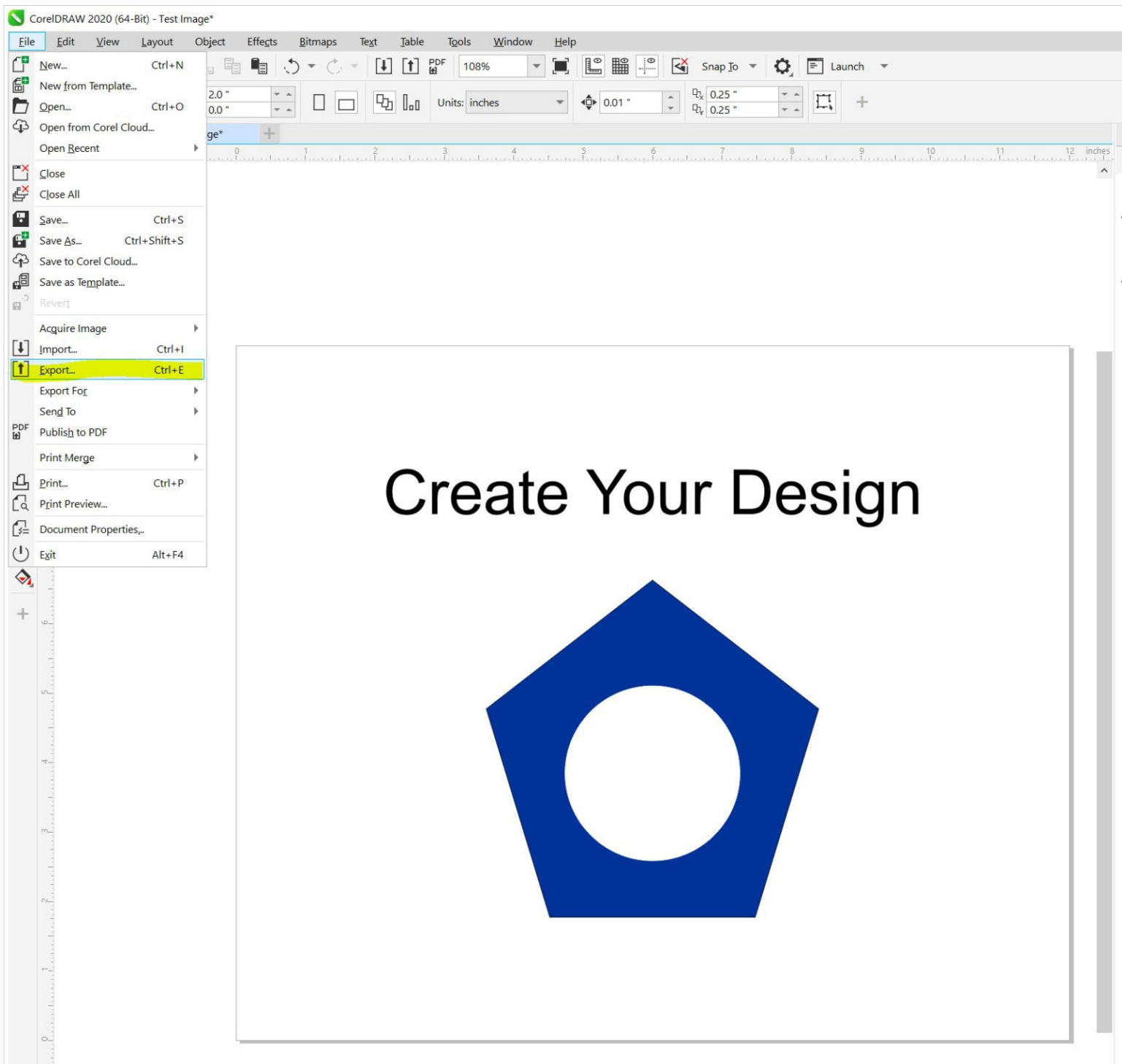


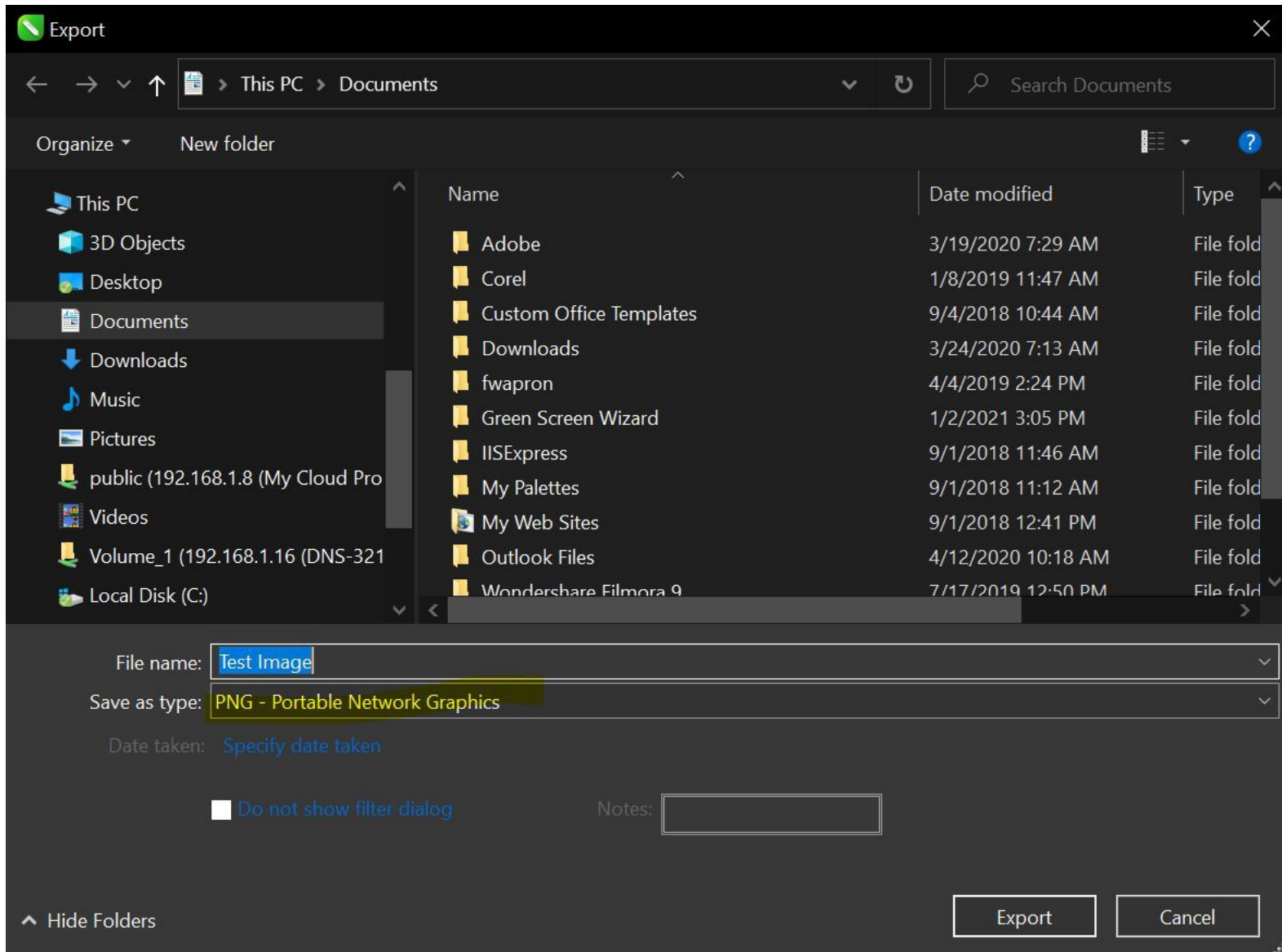
How to setup a file for DTF transfers in Corel Draw.



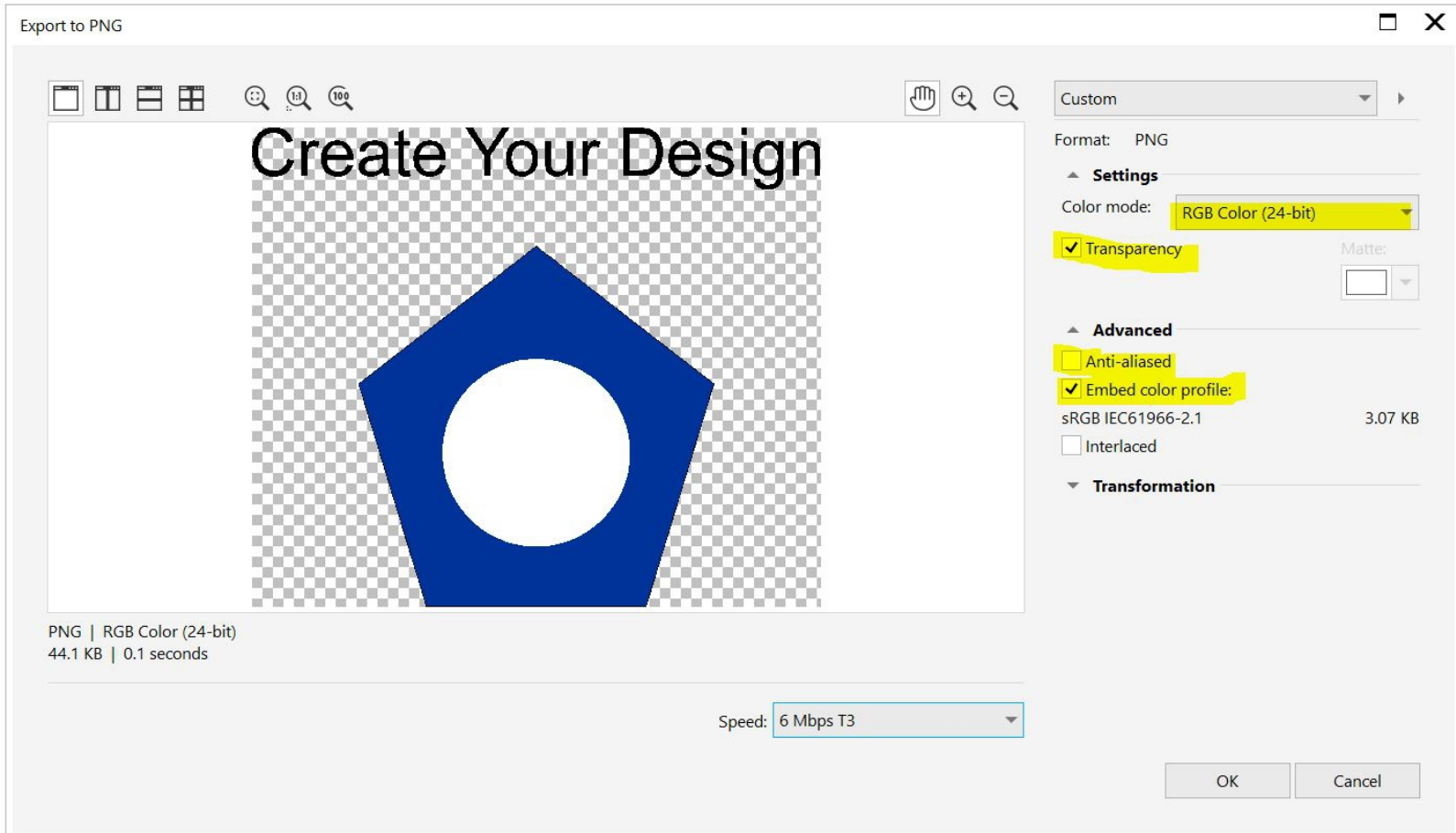
1. Make a new file with the following settings
 - a. Primary color mode: RGB
 - b. Set your width and height (in inches) for the size you want your design to be.
 - c. Set your orientation (landscape or portrait)
 - d. Set your resolution to 300 dpi
 - e. Set your RGB profile to sRGB IEC61966-2.1



2. Create your design using only RGB color values. Do not put anything in the design that you do not want printed. This includes notes, backgrounds, mockups, etc. If you made your canvas the correct size in step 1, you should fill most of the space. Save a master copy. When you are done, go to File > Export.



3. Make your settings for the first save screen
 - a. Name your file
 - b. Save as type: PNG - Portable Network Graphics
 - c. Click Export



4. Make your settings for the second save screen
 - a. Color mode: RGB Color (24-bit)
 - b. Check the box next to "Transparency"
 - c. Uncheck the box next to "Anti-aliased"
 - d. Check the "Embed color profile" box
 - e. Click "OK"